



Primelite Manufacturing Corp

407 S Main St, Freeport, NY 11520

Phone: 516-868-4411 | Fax: 516-868-4609

sales@primelite-mfg.com | www.primelite-mfg.com

PART #

#23/14-859-ESW

LAMP

Incandescent

VOLTAGE

120 V

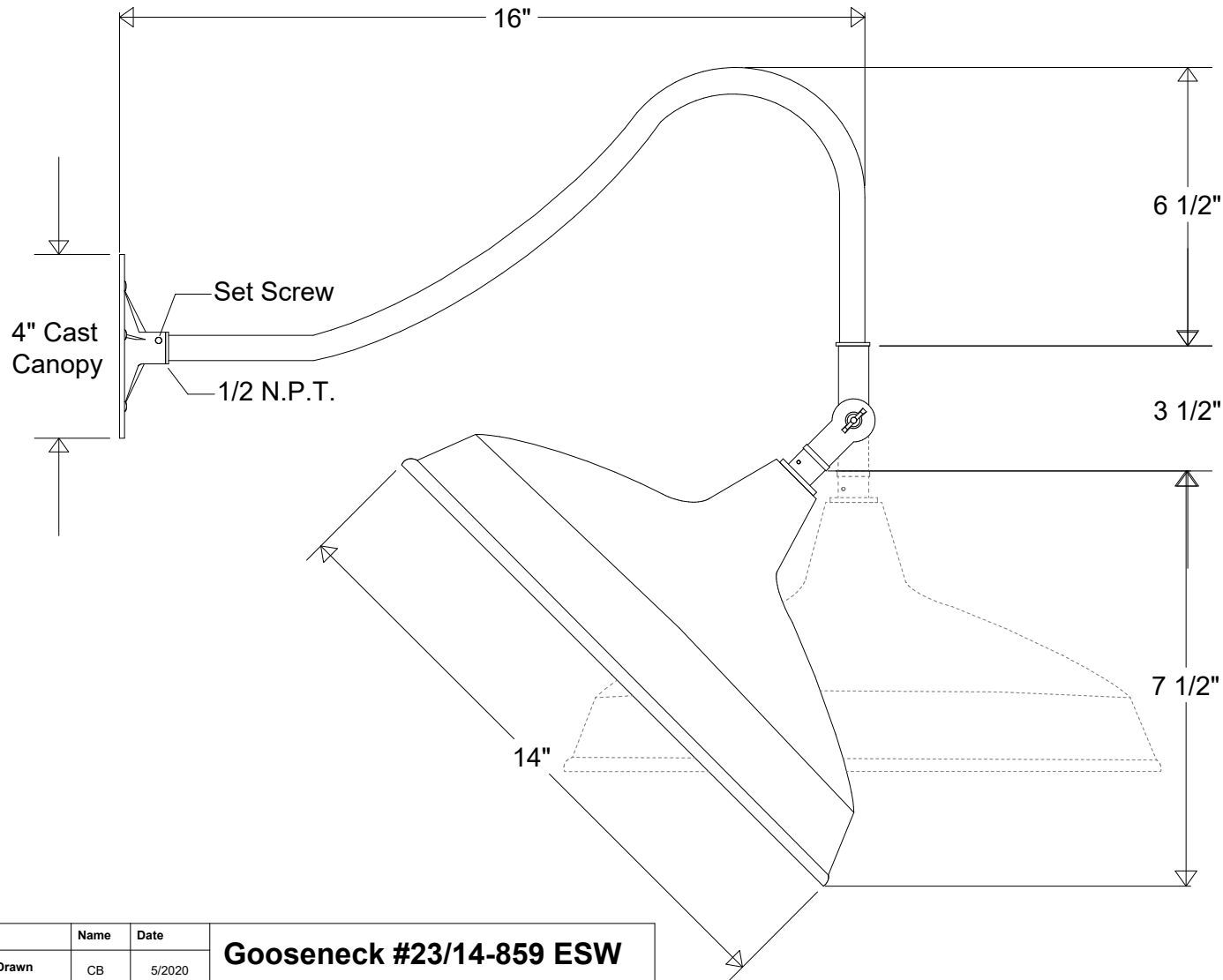
COLOR

Powder Coated Paint

JOB NAME

TYPE

Gooseneck



Lamp: Incandescent
Max Wattage: 1/150A



Name	Date
Drawn	CB 5/2020
Checked	
ENG Appr.	
MFR Appr.	
QA	

Gooseneck #23/14-859 ESW

14" Dia | 16" Arm | 90 Degree Swivel

Size

A

Drawing No.

0001

Rev

A

Construction: Aluminum

Unless Otherwise Specified:
Dimensions in Inches

Weight

Scale

CAD File

Sheet

1 of 1

Revisions

Zone	Rev	Description	Date	Approved