



Primelite Manufacturing Corp

407 S Main St, Freeport, NY 11520

Phone: 516-868-4411 | Fax: 516-868-4609

sales@primelite-mfg.com | www.primelite-mfg.com

PART #

#23/14-859-ESW

LAMP

Built-In LED

VOLTAGE

120 V

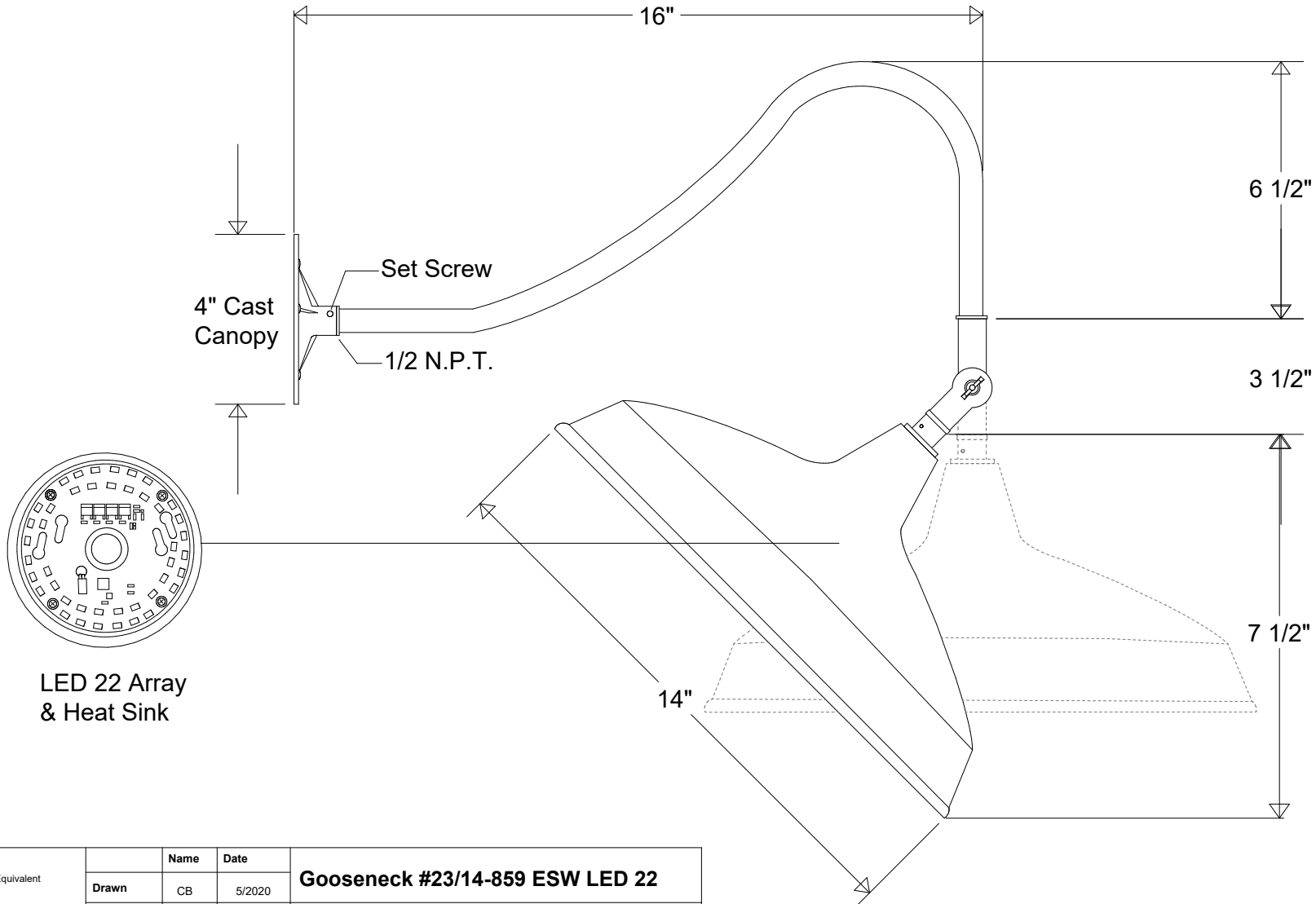
COLOR

Powder Coated Paint

JOB NAME

TYPE

Gooseneck



LED 22 Array
& Heat Sink

Lamp: LED 22 Array
1800 Lumens | 100 W Inc Equivalent



Name	Date	Gooseneck #23/14-859 ESW LED 22		
Drawn	CB	5/2020	14" Dia 16" Arm 90 Degree Swivel	
Checked			Size	Drawing No.
ENG Appr.			A	0001
MFR Appr.			Rev	A
QA			Scale	CAD File
Weight			Sheet	1 of 1

Revisions				
Zone	Rev	Description	Date	Approved