



Primelite Manufacturing Corp

407 S Main St, Freeport, NY 11520

Phone: 516-868-4411 | Fax: 516-868-4609

sales@primelite-mfg.com | www.primelite-mfg.com

PART #

#23/14-859-ESW-EE

LAMP

Incandescent

VOLTAGE

120 V

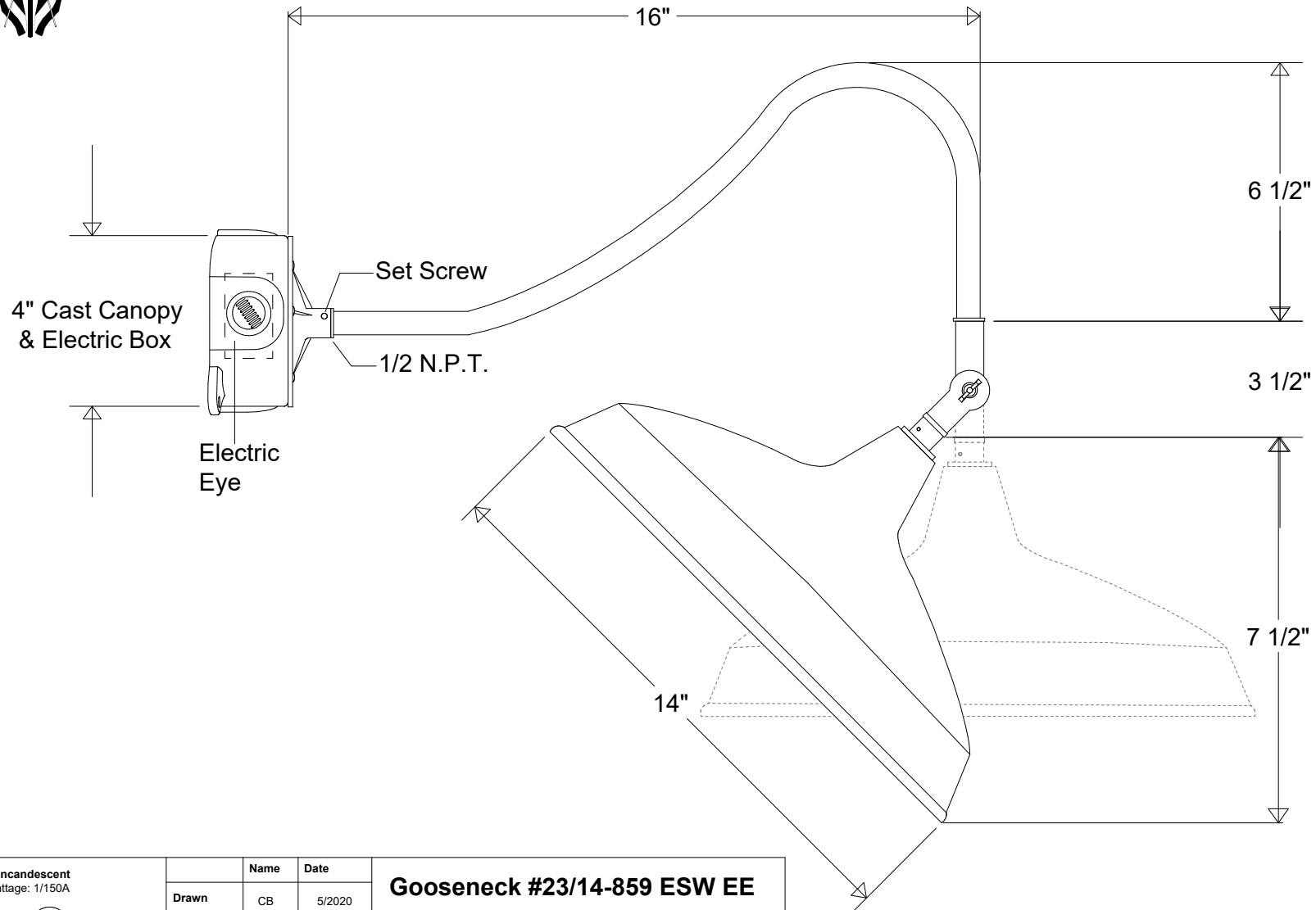
COLOR

Powder Coated Paint

JOB NAME

TYPE

Gooseneck



Lamp: Incandescent
Max Wattage: 1/150A



Name Date

Drawn CB 5/2020

Checked

ENG Appr.

MFR Appr.

QA

Weight

Gooseneck #23/14-859 ESW EE

14" Dia | 16" Arm | 90 Degree Swivel
Dusk to Dawn Sensor

Size

A

Drawing No.

0001

Rev

A

Scale

CAD File

Sheet

1 of 1

Revisions

| Zone | Rev | Description | Date | Approved |
|------|-----|-------------|------|----------|
| | | | | |
| | | | | |
| | | | | |
| | | | | |