



# Primelite Manufacturing Corp

407 S Main St, Freeport, NY 11520

Phone: 516-868-4411 | Fax: 516-868-4609

sales@primelite-mfg.com | www.primelite-mfg.com

PART #

#23/14-859-ESW-EE

LAMP

Built-In LED

VOLTAGE

120 V

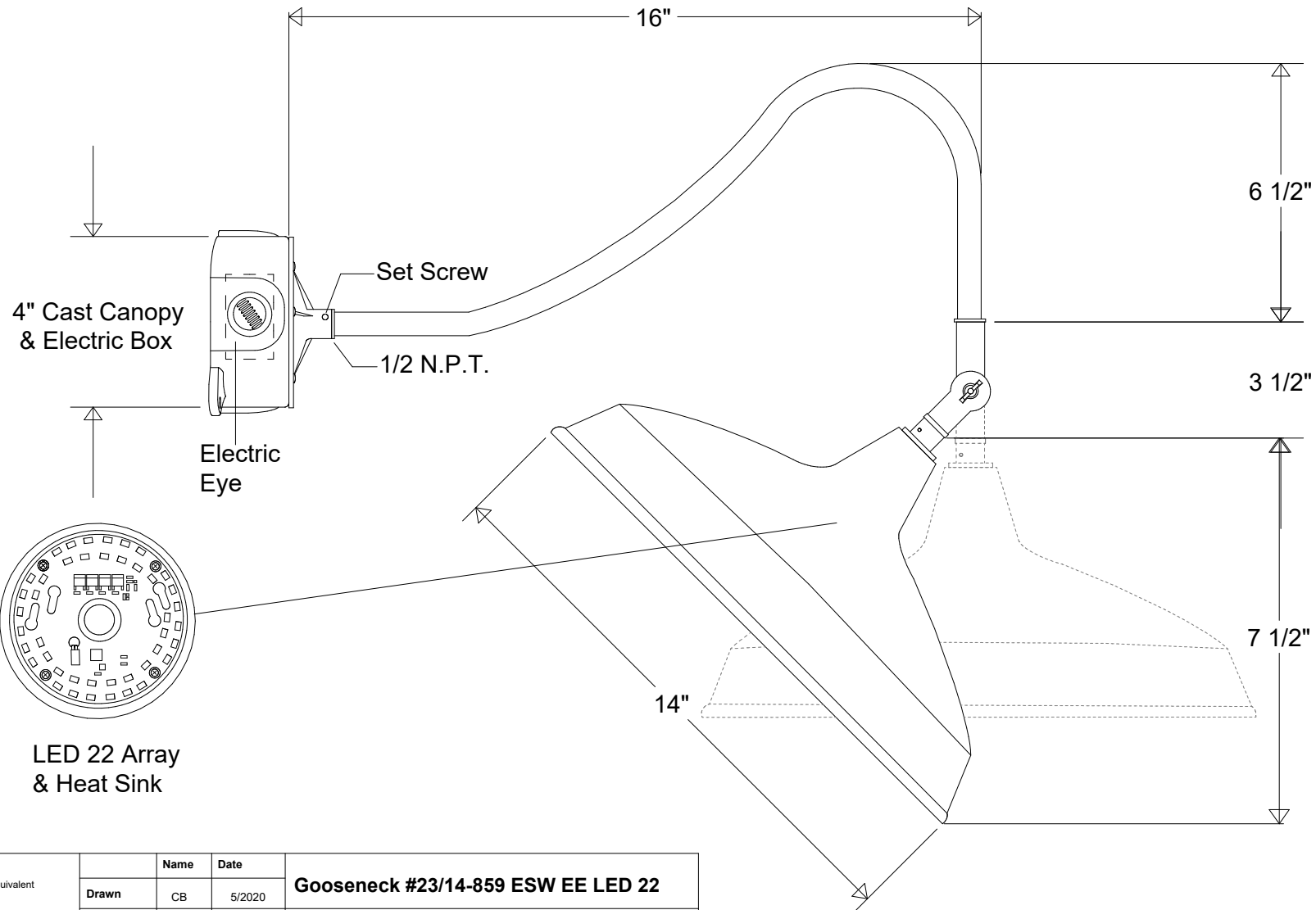
COLOR

Powder Coated Paint

JOB NAME

TYPE

Gooseneck



Lamp: LED 22 Array  
1800 Lumens | 100 W Inc Equivalent



Name	Date	Gooseneck #23/14-859 ESW EE LED 22		
Drawn	CB	5/2020	14" Dia   16" Arm   90 Degree Swivel Dusk to Dawn Sensor	
Checked			Size	Drawing No.
ENG Appr.			<b>A</b>	<b>0001</b>
MFR Appr.			Rev	<b>A</b>
QA			Scale	CAD File
Weight			Sheet	<b>1 of 1</b>

Revisions				
Zone	Rev	Description	Date	Approved